

SPA TREATMENT

A dreary bath becomes a light-filled oasis with space-saving fixtures and a restful palette.

writer **NANCY CHRISTIE**
photographer **JAMES SALOMON**
field editor **SUSAN SALOMON**

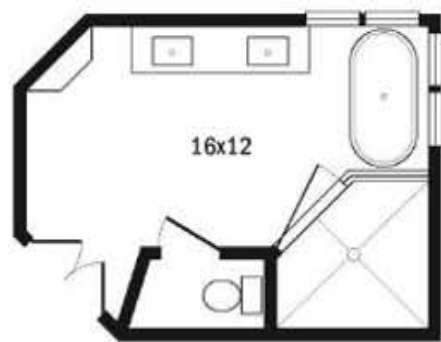
Tucking the freestanding tub in a quiet corner sets the scene for long, relaxing soaks. The vanity's java finish grounds the otherwise airy bath without overwhelming it.



from darkness to light. That's the story line for the overhaul of Lori and Matt McGill's master bath in their Washington, D.C.-area home. The dark and dreary space was so bad, with its dated black-tile tub surround, awkward vanity, and clumsy layout, that one of the first things the couple did after moving in was hire designer Nancy Twomey and lay out their vision for a total bath transformation. She heard them describe an open, airy bath with a fresh look and a soothing feel—but also a space that didn't stray too far from their home's Colonial style.

Twomey's first design decision was to use Calacatta Gold marble for the floor, the shower walls, and the wainscoting in the tub and vanity areas. She chose it for the light-gold veining that brings warmth to the stone. "It also carries over the tones from the master bedroom, so the two spaces have a dialogue with each other," she says.

Gray-beige Lagos Azul limestone for the vanity top and pale gray paint for the walls ensure that the marble remains the color story. "I didn't want any element of this bathroom to feel busy or



OPPOSITE TOP: Filling an unused corner with a tall, roomy built-in cabinet maximizes storage without hogging square footage. **OPPOSITE, BOTTOM LEFT:** Shiny chrome hinges accent the vanity's dark finish. Deep central drawers stow small items. **OPPOSITE, BOTTOM RIGHT:** A satin finish on the faucets and a silver-leaf finish on the vanity mirror bring touches of glamour. **THIS PHOTO:** Tall, narrow vanity mirrors accentuate the ceiling's height, while the sconces' frosted shades cast a flattering glow.



compete with each other," Twomey says. "Both the countertop and the paint take a backseat to the movement in the marble."

Making the most of the room's square footage was both a priority and a challenge, since Twomey and contractor Ricardo Navarro had to work within the existing bath's irregular footprint. "We could see that there was a lot of wasted space and bulk in the L-shape vanity and the built-in tub," Twomey says. Out went the cumbersome fixtures, and in went freestanding pieces—a java-finish furniture-style vanity and a classic white tub—that provide all of the function in a fraction of the space.

To further open up the bath, Twomey eliminated arched soffits over the vanity area. "This created a sense of spaciousness and made the room itself feel larger, even though the actual square footage never changed," she says. She also gained space by putting the room's angles to good use. An awkward 28x20-inch gap behind one of the angled walls was repurposed as a floor-to-ceiling corner cabinet that houses towels, toiletries, and a sound system. Placing the shower in a corner also capitalizes on once-unused space.

The McGills now view their bath as a source of solace rather than stress. With its newfound bright demeanor, this lightened-up bath is proof positive that simplicity can be stunning. **KBI**
RESOURCES BEGIN ON [PAGE 138](#).



OPPOSITE TOP: The showerheads' luxe, brushed-gold finish picks up the soft gold veining in the marble shower walls. **OPPOSITE, BOTTOM LEFT:** Lightweight lined Roman shades filter sunlight and provide privacy. **OPPOSITE, BOTTOM RIGHT:** A penny-round tile border defines an eye-catching visual rug on the bathroom floor. Subfloor heating warms up the stone. **THIS PHOTO:** Marble walls and multiple showerheads make even a quick shower a spa-like experience. Three stacked niches in the shower create order and interest.

bright idea

Place new tubs, showers, and other plumbing fixtures in the same locations as the originals to reduce costs.

